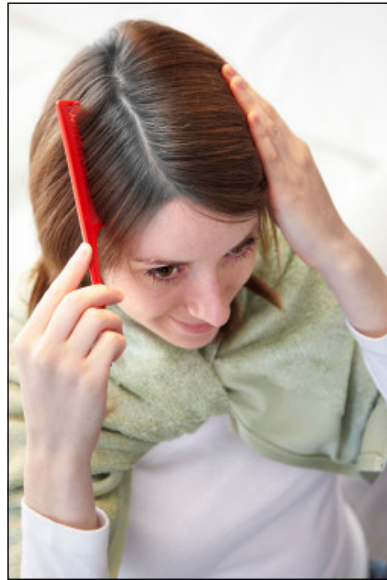




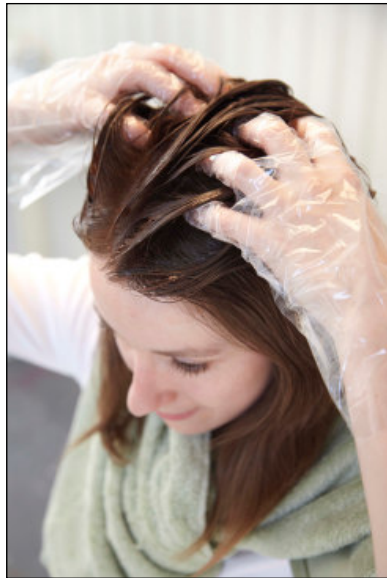
Step 1: Put on the gloves provided. Uncap both bottles and pour the contents of the Colour Gel bottle into the ColourFix bottle. Replace the applicator cap on the ColourFix bottle and gently shake 4 or 5 times.



Step 2: Part the hair, so that you can start the colouring at the roots.



Step 3: Unscrew the tip of the applicator cap. Starting at the roots, squeeze the colour through the applicator onto the hair. Continue across the whole of the hair. If you are only covering regrowth, apply the colour to the roots only, leave for 20 minutes and then apply the colour to the rest of the hair for a further 10 minutes. Then add a few drops of water to the colour, as described in step 4, and follow the rest of the instructions.



Step 4: Gently massage the colour into the hair and leave for 30 minutes to develop. For strong grey hair, leave on for a further 10 minutes. Then add a few drops of water to the colour and work into a lather. Rinse thoroughly until the water runs clear. Using the Tints of Nature Shampoo sachet, shampoo the hair and rinse thoroughly. Apply the Tints of Nature Conditioner sachet, massage into the hair and leave on for 5 minutes. Rinse thoroughly.

